

DUNKERQUE
PORT

VOUS ÊTES À BON PORT



NORLINK PORT

300 KM



**3 MARITIME
PORTS**

**20
INLAND
PLATFORMS**

**A STRONG LINK IN THE
NORTH EUROPE RANGE
AND INSIDE THE
NORTH-SOUTH AND
EAST-WEST CORRIDORS**

THE HAUTS-DE-FRANCE REGION :

- **6 MILLION PEOPLE**
- **A VARIED AND DENSE INDUSTRIAL PLANTS**
- **FIRST POSITION FOR RAILED FREIGHT**

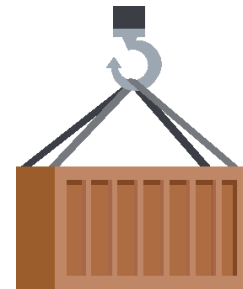


TRAFFIC (2019)

MT 53
+ 3 %



PASSENGERS
+/- 2.35 million



CONTAINERS
TEU 450,000



TRUCKS
+/- 583,000
vehicles



LIQUID BULK & GAS
MT 9,4



DRY BULK
MT 23,5

FOOD INDUSTRY SECTOR, 4.3 MT OF WHICH :



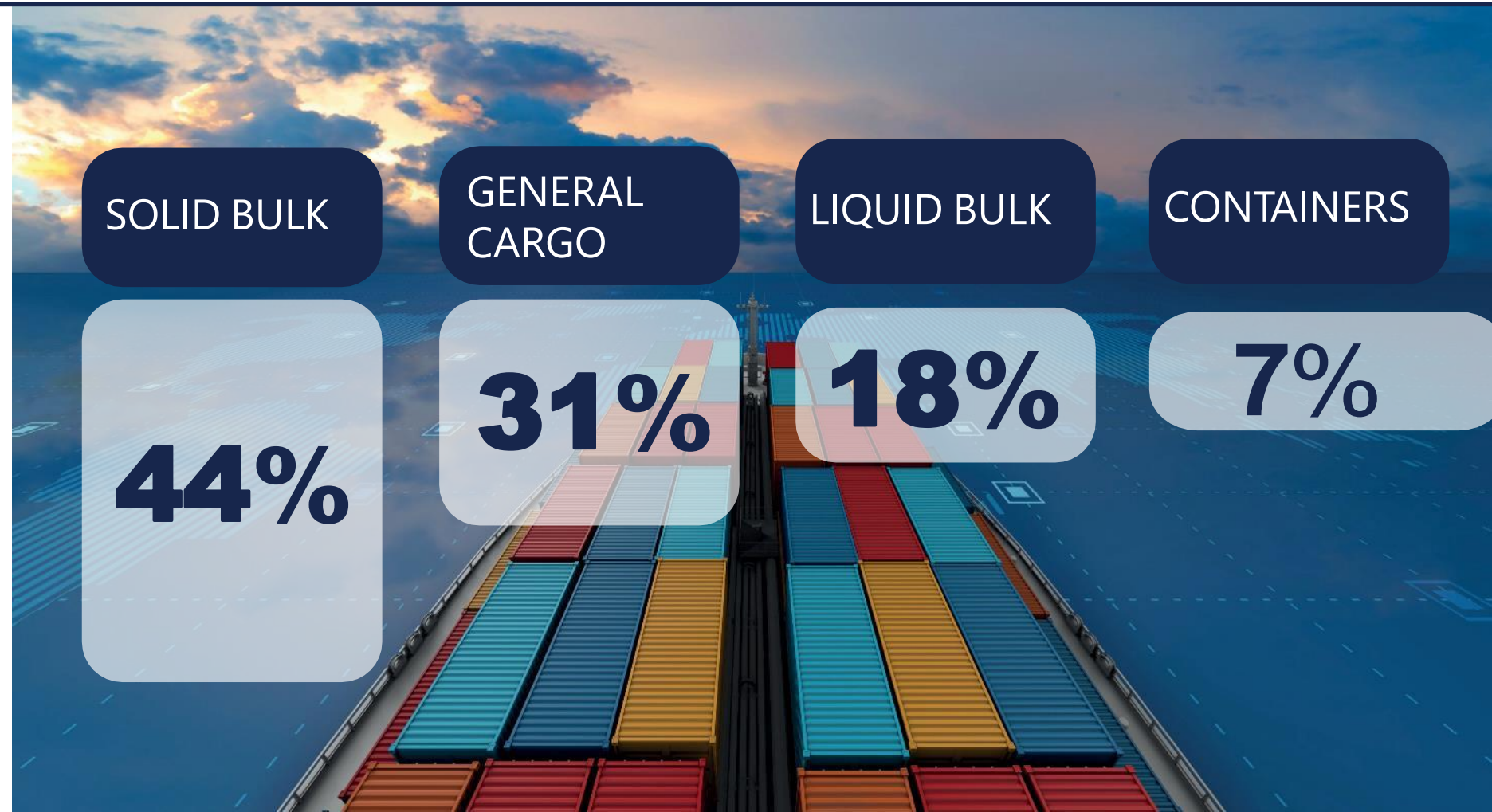
FRESH PRODUCTS
+ 700,000 tons



SUGAR
150,000 tons



GRAIN
MT 2



TERMINAL DES FLANDRES



1800M QUAY LENGTH

8 GANTRY CRANES

700 REEFER PLUGS

DRAFT OF 17,5M

DEEPSEA SERVICES

SHANGHAI /
DUNKIRK
29 DAYS





PCRFR FOCUS CARIBBEAN

North Europe - Caribbean destinations



CMA CGM Strengths

- Direct call in London for Caribbean destinations
- Direct calls in Dunkerque and Montoir to Caribbean destinations
- Connection with CMA CGM Feeder network in Kingston
- Service dedicated to reefer transport from Costa Rica, Colombia and the French West Indies to North Europe



S HORTSEA SERVICES



Great Britain

Teesport,
Grangemouth

Great Britain

Dover - 12 dep/jour

Ireland (BG Freight)

Cork, Dublin

BG Freight

Rotterdam, Montoir,
Brest

MSC

Teesport, Antwerp, Le
Havre, Brest, Montoir

Spain

Bilbao, Vigo, Gijón

Portugal

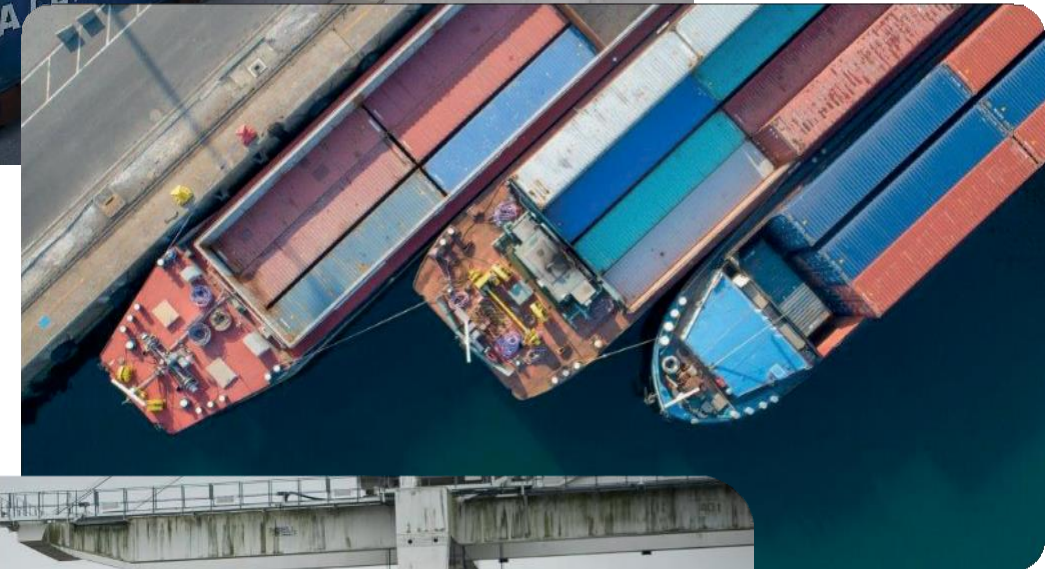
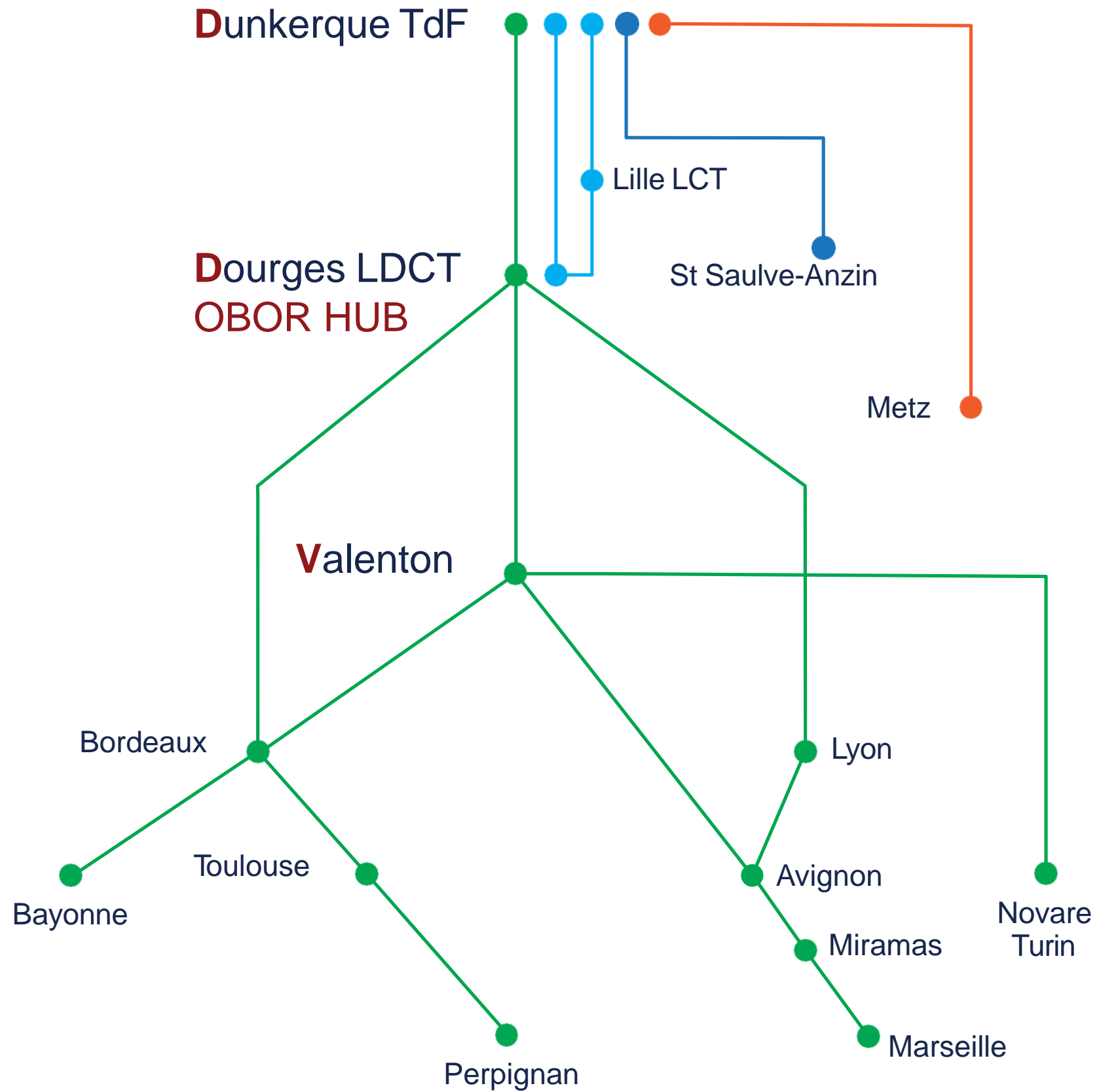
Setubal, Leixoes

Med

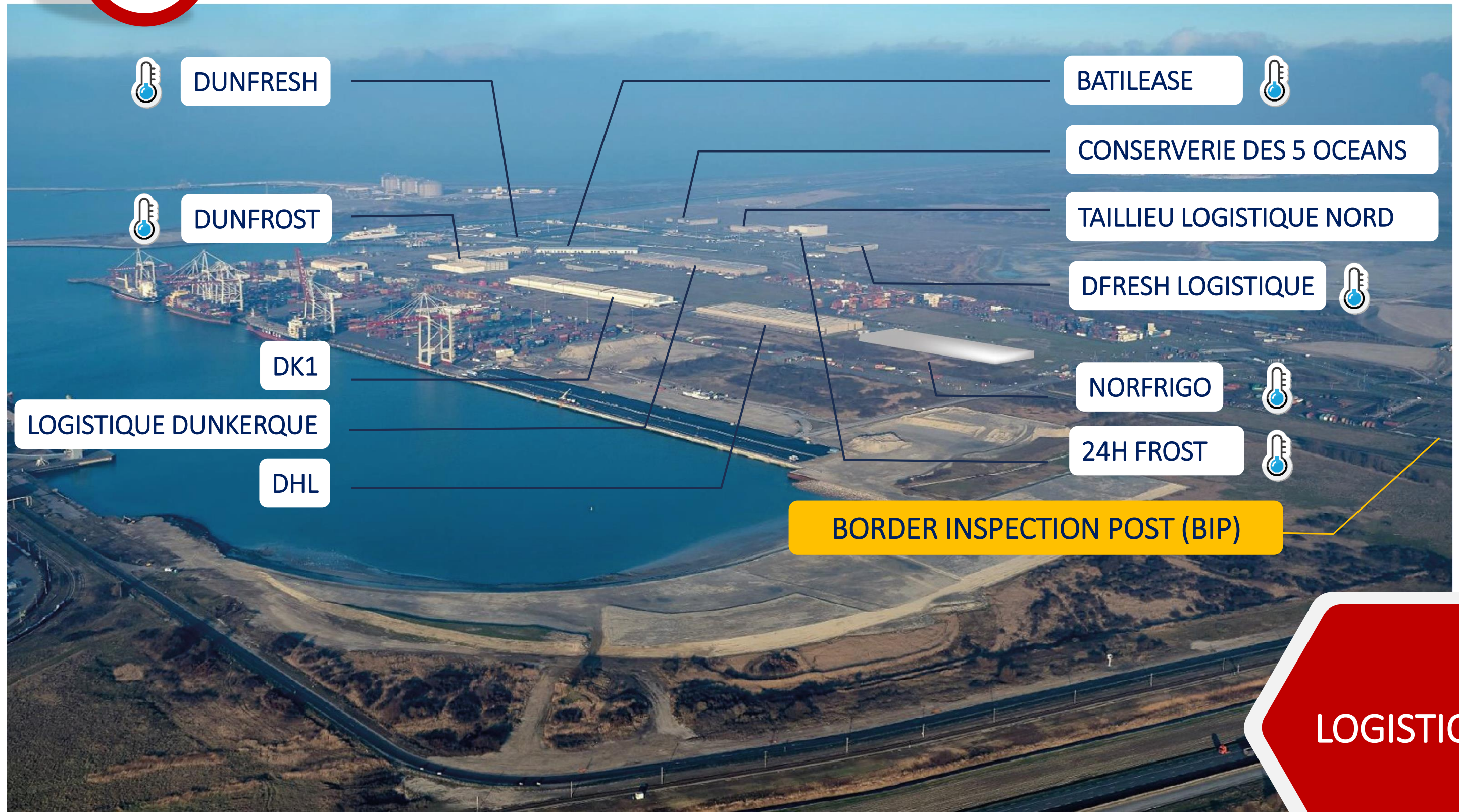
Tanger, Valencia,
Genova, Pireas,
Istanbul



MULTIMODAL TRANSPORT



CURRENT CAPACITY NEARBY THE TERMINAL



DUNFRESH



DUNFROST

DK1

LOGISTIQUE DUNKERQUE

DHL

BATILEASE



CONSERVERIE DES 5 OCEANS

TAILLIEU LOGISTIQUE NORD

DFRESH LOGISTIQUE



NORFRIGO



24H FROST



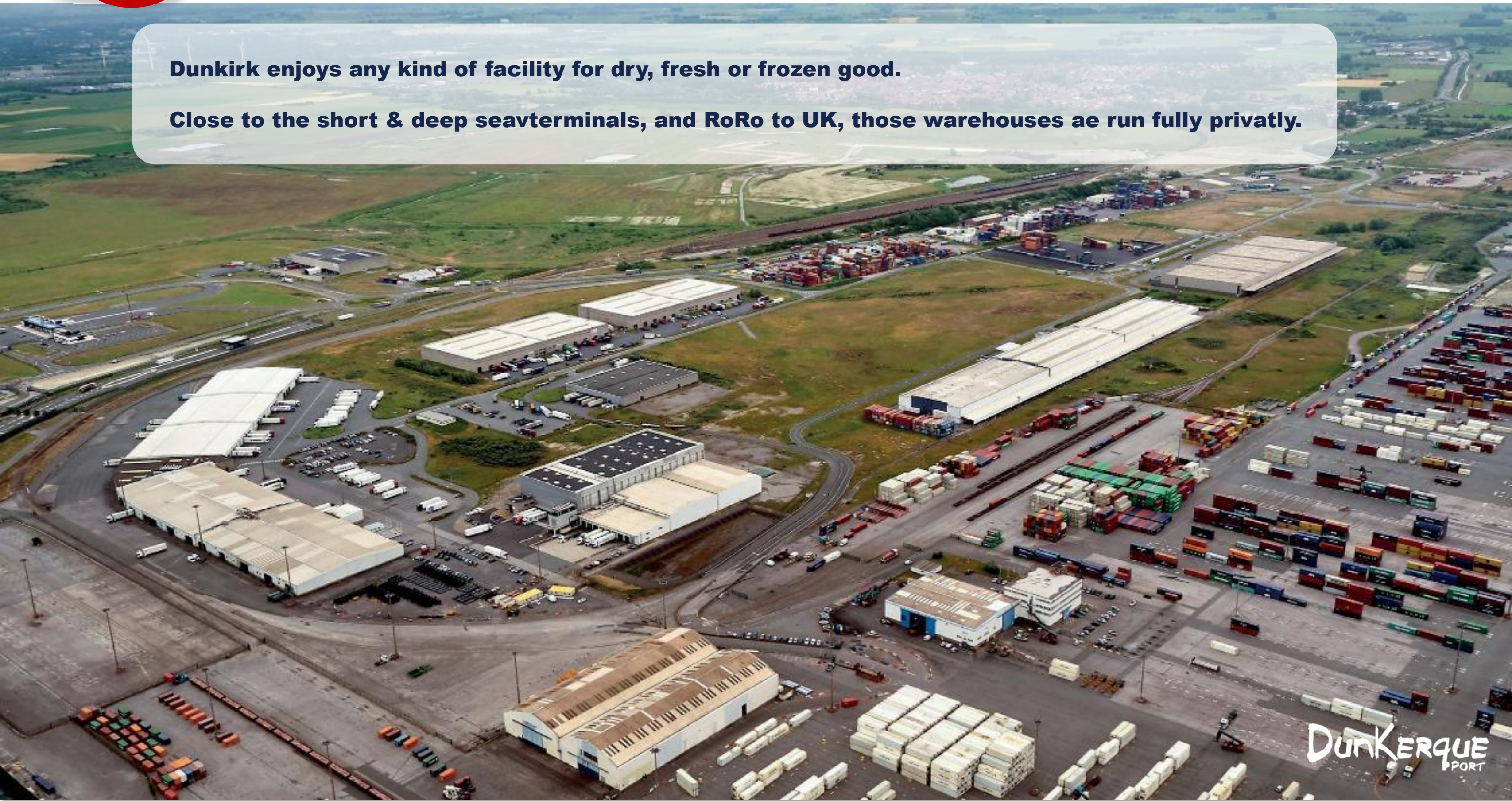
BORDER INSPECTION POST (BIP)

LOGISTICS

CREATE YOUR LOGISTIC BASE IN DUNKIRK

Dunkirk enjoys any kind of facility for dry, fresh or frozen good.

Close to the short & deep seavterminals, and RoRo to UK, those warehouses ae run fully privatly.



DUNKIRK LOGISTICS INTERNATIONAL: INVEST !



**CURRENT
CAPACITY
150,000M2**



**DLI
ADDITIONNAL
CAPACITY
400,000M2**

NEW LOGISTIC SET UPS



2018



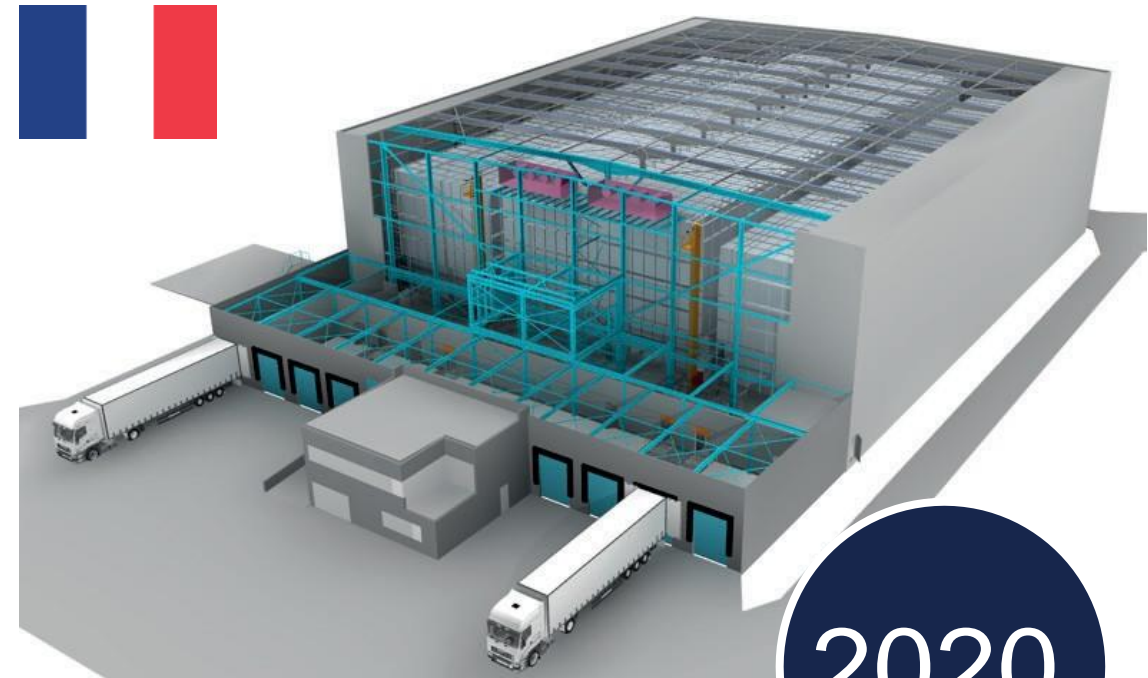
60,000 M3



2019



80,000 M3



2020



48,000 M3

BASED ON DLI



**42,000 M2
DRY STORAGE.
AUTOMATISED
WAREHOUSE OF 80 000
PALLETES FOR FROZEN
CARGO**





THANK YOU

